

Fluke Energy Analyze Release Information

Table of Contents

Revision History	2
Fluke Energy Analyze V1.2.....	2
Fluke Energy Analyze V1.1.....	3
Fluke Energy Analyze V1.0.....	4
FAQ	4

Revision History

Fluke Energy Analyze V1.2

- New Feature: “Time-range tables” and “Graph views” can be shown concurrently. Pull time-range table up to do this. Use blue expand/collapse icons to switch views.
- New Feature: “Download data” from instrument using a Wi-Fi connection. FEA 1.1 and previous connected to instruments through USB, only.
- New Feature: Show “inductive/capacitive loads” or “load direction” with Power Factor results in graphs and tables.
- New Feature: “Customize trace colors” – users can pick custom colors to be used for individual traces on plots.
- New Feature: “Create reports in .rtf” – Rich text format has been added as a choice for report output formats (menu ‘Setting/Report output format/...’).
- New Feature: “Project Manager” shows extended session information (transducer ratio, time zone adjusted on instrument when logging, ...)
- New Feature: Exported data contains time zone information.
- New Feature: If a session description is truncated on the “data download” panel, point to that entry and get the full description shown in a tool tip.
- New Feature: Bookmark items can be renamed from within the report tab.
- Improved: Users can open a .fel file (e.g. received USB thumb drive contents by email) from the file-open dialog and do not have to use the file download panel any more.
- Improved: Option to choose data logged within trend or demand interval for graph view under Energy Study/Demand tab. Additionally to the data source (trend or demand), the drop-down selection lets you define aggregation intervals to be applied to all shown data. A function that automatically re-calculates data to a common aggregation interval for all shown sessions is also offered in order to help comparing data that was (erroneously) logged at different interval lengths.
- Improved: Working with notes – text input box can be resized.
- Improved: Working with zoom in graph views – occasionally the zoom rectangle was not shown.
- Improved: Occasionally, time-range tables were not shown correctly after restarting FEA.
- Improved: Last shown graph views were not restored properly when restarting FEA.
- Improved: Collapsed/expanded state of table views were not restored properly when restarting FEA.
- Improved: Readability of axis (x and y) labeling in all graph views.
- Improved: FEA memory management has been reworked leading to slightly faster starting, lower memory and OS resource consumption.
- Fixed: Calculation and display of Power Factor results.
- Fixed: Recalculation of volts, amps, and estimated apparent power to different aggregation intervals.
- Fixed: FEA occasionally stopped working when a large session file was shown at high granularity in calendar tab (e.g. months-long logging shown in hours).

Known issues:

- Adding a high-resolution image on the 'Project Manager' tab will show distorted colors. Pictures are printed properly in reports, though!
- Reports created in Japanese language result in large .pdf files (font embedding).
- New Feature: Show reliability of displayed values in [%] valid vs invalid readings – the text used in tool tips has not become translated and is shown in English, only.
- Fixed: ~~If notes are placed in close proximity on a curve they will overlap. Zooming out can cause notes to become hidden. All notes are printed OK according to the actual visibility in reports.~~
- Fixed: ~~The state of table views may become distorted — i.e. some tables may be shown in collapsed state though they should be shown in expanded state. Reopening the analysis file resets this error.~~
- Manuals updated. ~~Energy Analyze Help will give information related to V1.0 — new help topics will be made available at www.fluke.com shortly.~~

Fluke Energy Analyze V1.1

- New Feature: “Add Notes” to graphs. Notes can be attached to a curve point or become placed on the graph area. Notes that are anchored with a curve will be prefilled with clear-text readings of the corresponding curve point and will only be printed in reports if they are visible at the time of creating the report item. Notes that are placed on the graph area (not anchored with a curve point) will remain visible regardless of the adjusted zoom levels and will always be printed in reports. Notes can be edited, removed, or moved/attached, select either action from a context menu (right-mouse button click on a note).
- New Feature: “Add Image” accepts generic .jpg images.
- New Feature: Instrument screen shots are shown and can be loaded from the data download dialog. Data on the instrument can be after downloading from the same dialog.
- New Feature: Users can adjust what data to export when using the ‘Export’ widget in the ‘Project Manager’ tab.
- New Feature: the ‘Settings’ widget in the ‘Project Manager’ tab can be used to correct/adjust scaling parameters for AUX channels, and to enter cost of energy parameters.
- New Feature: use ‘Synchronize time...’ from the ‘Settings’ menu to adjust the instrument time. This function is not available during logging.
- New Feature: Time range tables can be viewed concurrently with graph views; tables are switched off if no time range is selected.
- Added Japanese UI translation.
- Improved: display of icons on the ‘Calendar’ tab after removing sessions from a project.
- Improved: occasional data corruption caused by removing sessions.
- Improved: application stability with different date/time format settings.
- Improved: corrected display of Power Factor min/max values.
- Improved: multiple limit lines were shown when only one was expected.

Known issues:

- Adding a high-resolution image on the 'Project Manager' tab will show distorted colors. Pictures are printed properly in reports.
- If notes are placed in close proximity on a curve they will overlap. Zooming out can cause notes to become hidden. All notes are printed OK according to the actual visibility in reports.
- The state of table views may become distorted – i.e. some tables may be shown in collapsed state though they should be shown in expanded state. Reopening the analysis file resets this error.
- Reports created in Japanese language result in large .pdf files (font embedding).
- Energy Analyze Help will give information related to V1.0 – new help topics will be made available at www.fluke.com shortly.

Fluke Energy Analyze V1.0

Initial Release

FAQ

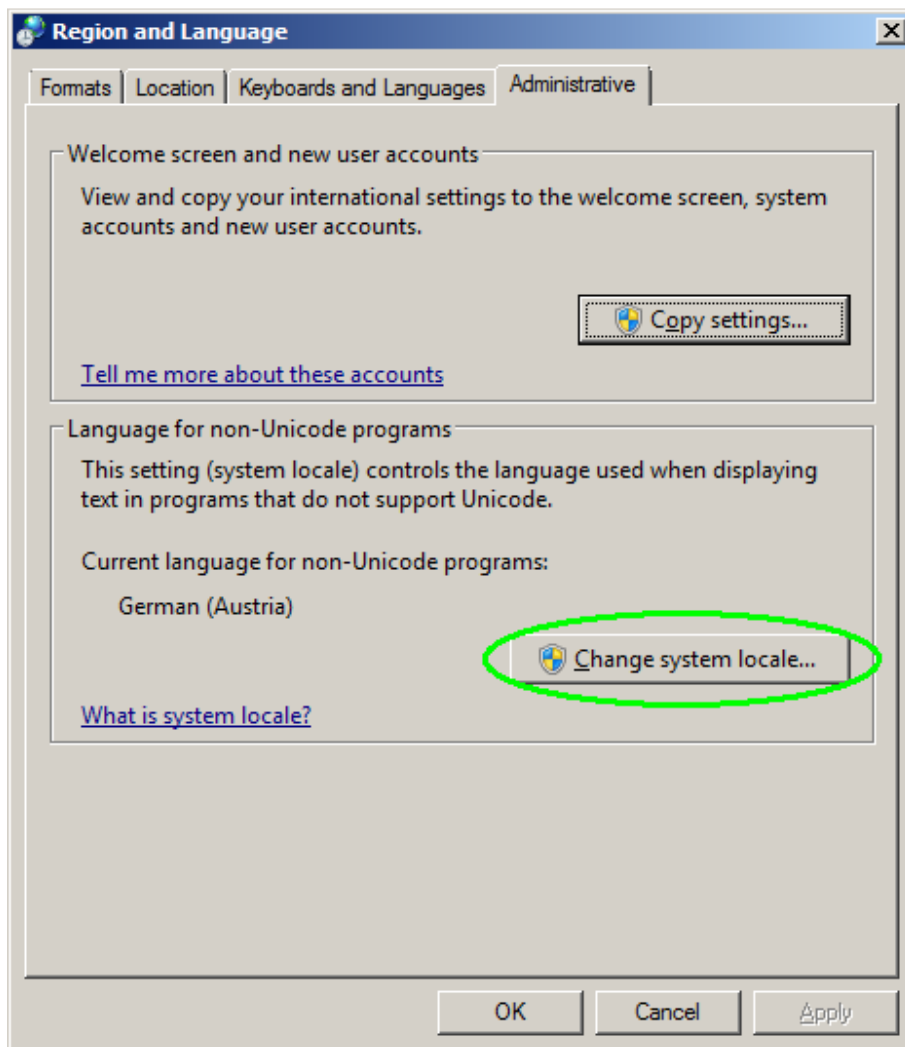
- **Q:** Fluke Energy Analyze shows question marks (?) on graph legends and cursor readouts. How can I get proper readings?

A: Make sure the “Language for non-Unicode programs” is adjusted to the language you want to use Fluke Energy Analyze with. On Windows 7, the setting is adjusted as follows (you need administrative rights to change the setting):

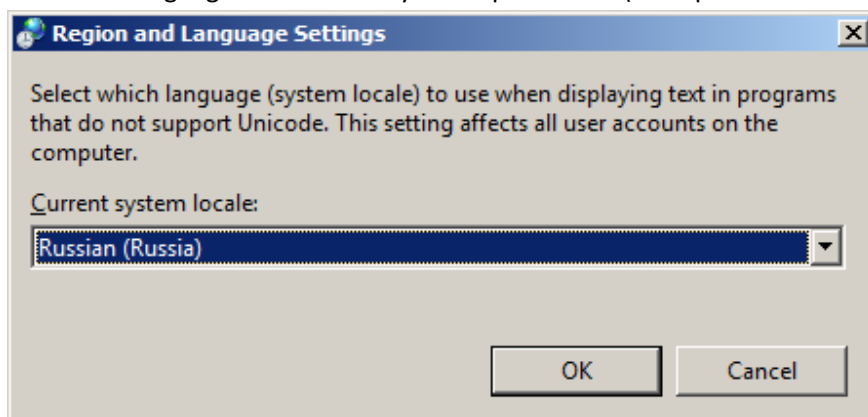
From the Control Panel, select “Change display language”



Go to the “Administrative” tab and click “Change system locale...”



Select the language that matches your requirements (example here: Russian)



Click "OK" – you may need to reboot your PC for the adjustment to take effect.

- **Q:** Reports in Korean or Simplified Chinese language do not contain show invalid characters. How can I create a report (.pdf file) in these languages?
A: The Fluke Energy Analyze report writer expects the fonts "Microsoft YaHei" for Simplified Chinese, and "Malgun Gothic" for Korean to exist, which may not be the case if running Windows

XP. If reports do not show reasonable texts in these languages under Windows XP, the mentioned fonts need to be obtained from the links given below:

“Malgun Gothic”: <http://www.microsoft.com/en-us/download/details.aspx?id=10490>

“Microsoft YaHei”: <http://www.microsoft.com/en-us/download/details.aspx?id=14577>

- Q: I have got two or more Fluke 1730 Energy Loggers connected to my PCs USB ports and want to download data concurrently. Does Fluke Energy Analyze support this?

A: Fluke Energy Analyze allows the connection of several instruments at the same time, but cannot download data from these concurrently; you need to select one unit after another as “Source”.

There is a weakness that occasionally can cause malfunction if multiple units are attached at the same time. If this occurs, the instruments (USB sticks) are not listed on the “Source” dropdown selector, and you need to temporarily disconnect unused instruments (or USB sticks) as a workaround.

- Q: I tried loading data from the instrument using a Wi-Fi connection to the instrument, but FEA does not show or fill the “download data” panel.

A: FEA relies on the operating system to qualify a Wi-Fi link as “available”, and shows the panel only after having access to an ‘available’ Wi-Fi connection. The time this takes may depend on other applications running on the same computer. It is recommended to enable the “Connect automatically” option (Network and Sharing Center) when connecting to a 1730 device for the first time. This will speed up subsequent connections and also avoid having to repeatedly input the WPA2 security key.